

# NDP-50 Specifications

## Port Dimensions (164 GPM Max.)

### Intake & discharge connection:

Polypropylene (PPG)	2" ANSI B16.5 #150
Kynar® (PVDF)	2" ANSI B16.5 #150
Aluminum (ADC-12)	2" ANSI B16.5 #150 (with tapped 2" Female NPT)
Stainless Steel (316)	2" ANSI B16.5 #150 or 2" Female NPT
Cast Iron	2" Female NPT
Air inlet (incl. ball valve):	3/4" Female NPT
Air exhaust (incl. silencer):	1" Female NPT

## Maximum Liquid Temperature\*

Diaphragm Material	Temperature
Neoprene	180°F (82°C)
Buna N	180°F (82°C)
EPDM	212°F (100°C)
Hytrell® (TPC-ET)	248°F (120°C)
Santoprene® (TPE)	212°F (100°C)
Viton® fluoroelastomer	248°F (120°C)
Teflon® (PTFE)	212°F (100°C)

\* The maximum liquid temperature for metal and Kynar®-fitted pumps is determined by the elastomer (diaphragm material). Polypropylene pumps have a maximum liquid temperature of 180°F (82°C) regardless of diaphragm material.

## Air Supply Pressure (All Models)

20–100 PSI (1.4–7 kfg/cm)

## Discharge Volume Per Cycle

Rubber diaphragm: 1.12 gallons (4.25 liters)

PTFE diaphragm: 0.69 gallons (2.61 liters)

## Maximum Cycles Per Minute

Rubber diaphragm: 146

PTFE diaphragm: 220

## Maximum Size Solid

5/16" (8 mm)

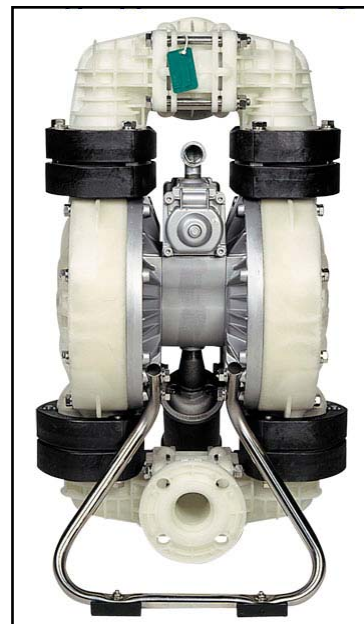
## Maximum Dry Suction Lift

Rubber-fitted pump capability: 19-feet

## Aluminum Air Motor–Standard

Optional: Epoxy-coated, Teflon®-coated, or Electroless Nickel Plate

All Polypropylene, Aluminum, Cast Iron, and Stainless Steel Hytrell® fitted pumps include Buna N check balls & o-rings and Santoprene® fitted pumps include EPDM check balls & wetted o-rings. Kynar® (PVDF) pumps fitted with Santoprene®, Hytrell®, or Teflon® include Teflon® check balls & o-rings. Kynar®/EPDM fitted pumps include EPDM check balls & o-rings and Viton® fitted include Viton® balls & o-rings.



**Aluminum (top left)**  
**Dimensions:** 17.68" W x 30.67" H  
**Net Wt.:** 88 lbs. (39.9 kg)  
**Shipping Wt.:** 99 lbs.

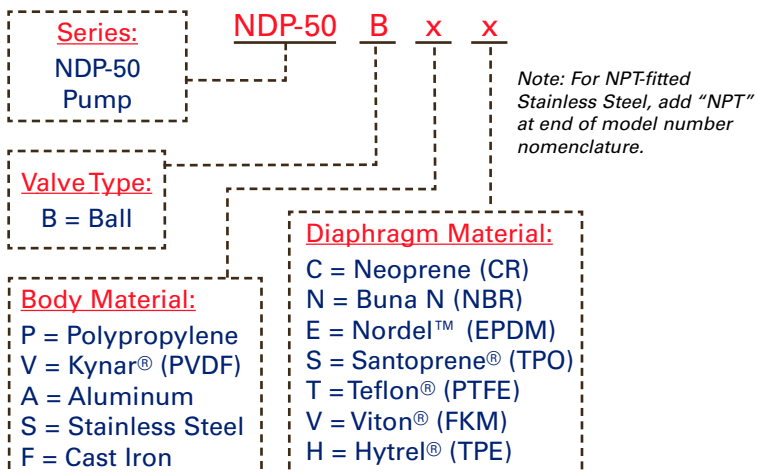
**Polypropylene or Kynar® (top right)**  
**Dimensions:** 18.63" W x 32.32" H  
**Net Wt.:** 84 lbs. (38.1 kg)  
**Shipping Wt.:** 108 lbs.

**Cast Iron or Stainless Steel (left)**  
**Dimensions:** 17.72" W x 30.55" H  
**Net Wt.:** Cast Iron–159 lbs. (72.1 kg)  
SS –162 lbs. (73.5 kg)  
**Shipping Wt.:** Cast Iron–168 lbs.  
SS –173 lbs.



Note: ANSI Flange available for Cast Iron and Stainless Steel

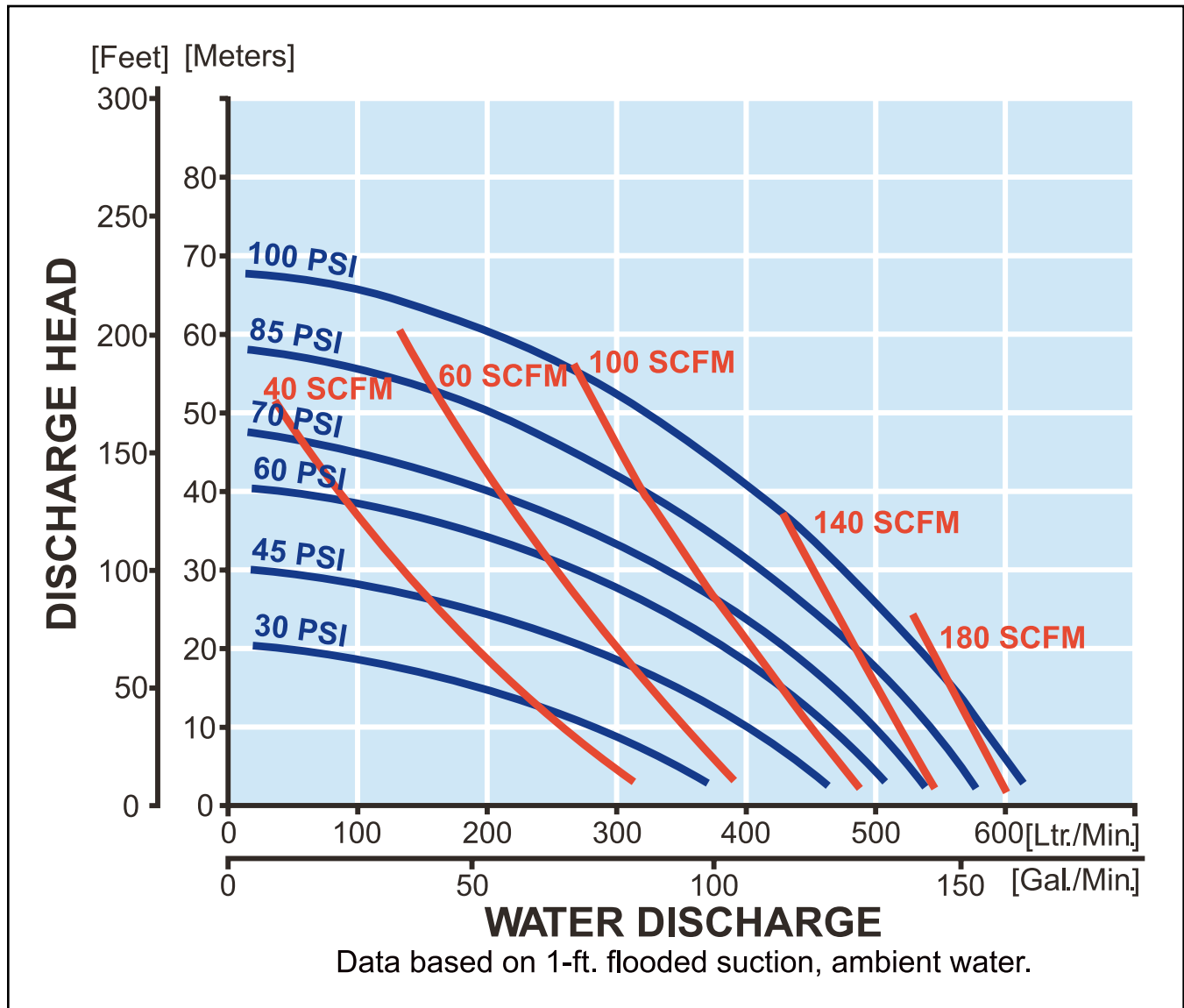
## Model Number Nomenclature



**Yamada America, Inc.** 955 E. Algonquin Road, Arlington Heights, IL 60005  
USA Toll-Free: 800 990-7867 Phone: 847 631-9200 Fax: 847 631-9273  
E-mail: sales@yamadapump.com Web: [yamadapump.com](http://yamadapump.com)

# NDP-50 Performance Curve — Rubber

## Rubber Diaphragm Performance Curve



To calculate performance for Santoprene® and Hytrel®-fitted pumps, use Rubber Diaphragm Curve.



**PSI Prolew Inc.**

975 Selkirk, Pointe-Claire  
Québec, Canada H9R 4S4  
Tel: (514) 697-7867  
Fax: (514) 697-0057

3770A Laird Road, Unit 1,  
Mississauga, ON L5L 0A7  
Tel: (905) 820-6330  
Fax: (905) 820-6338

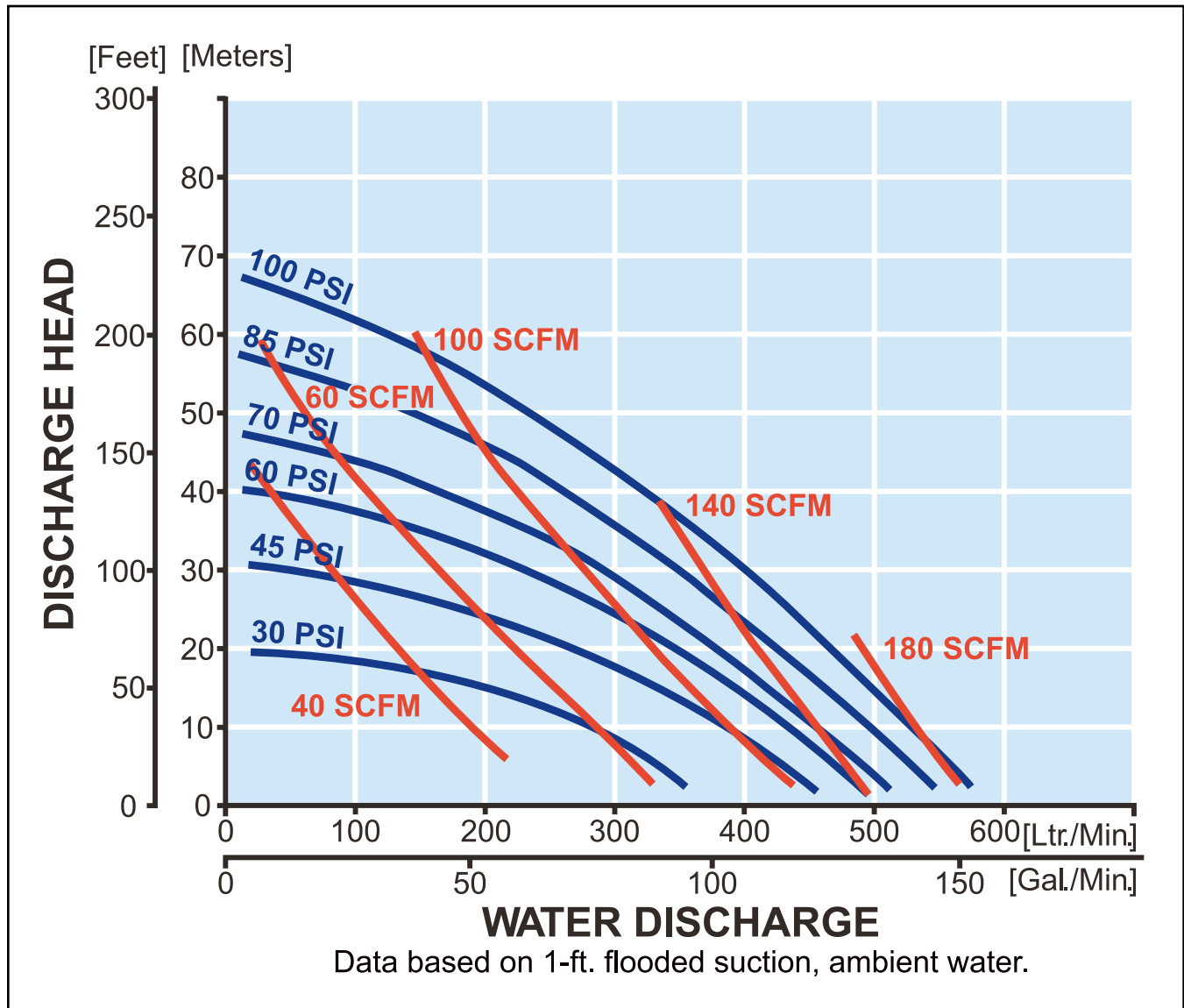
[www.psiprolew.com](http://www.psiprolew.com)



**Yamada America, Inc.** 955 E. Algonquin Road, Arlington Heights, IL 60005  
USA Toll-Free: 800 990-7867 Phone: 847 631-9200 Fax: 847 631-9273  
E-mail: [sales@yamadapump.com](mailto:sales@yamadapump.com) Web: [yamadapump.com](http://yamadapump.com)

# NDP-50 Performance Curve — PTFE

## PTFE Diaphragm Performance Curve



To calculate performance for Santoprene® and Hytrel®-fitted pumps, use Rubber Diaphragm Curve.



**PSI Prolew Inc.**

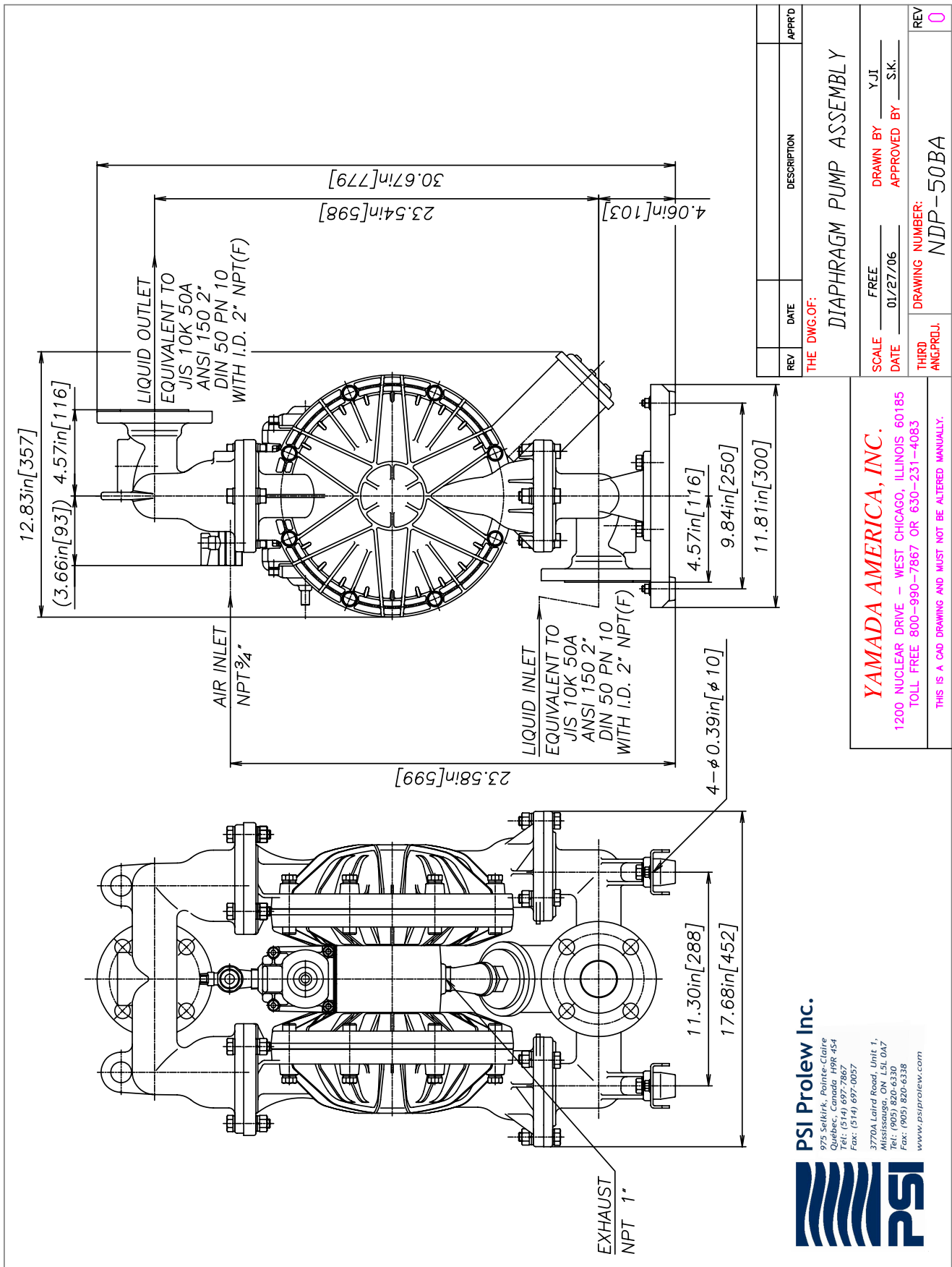
975 Selkirk, Pointe-Claire  
Québec, Canada H9R 4S4  
Tél: (514) 697-7867  
Fax: (514) 697-0057

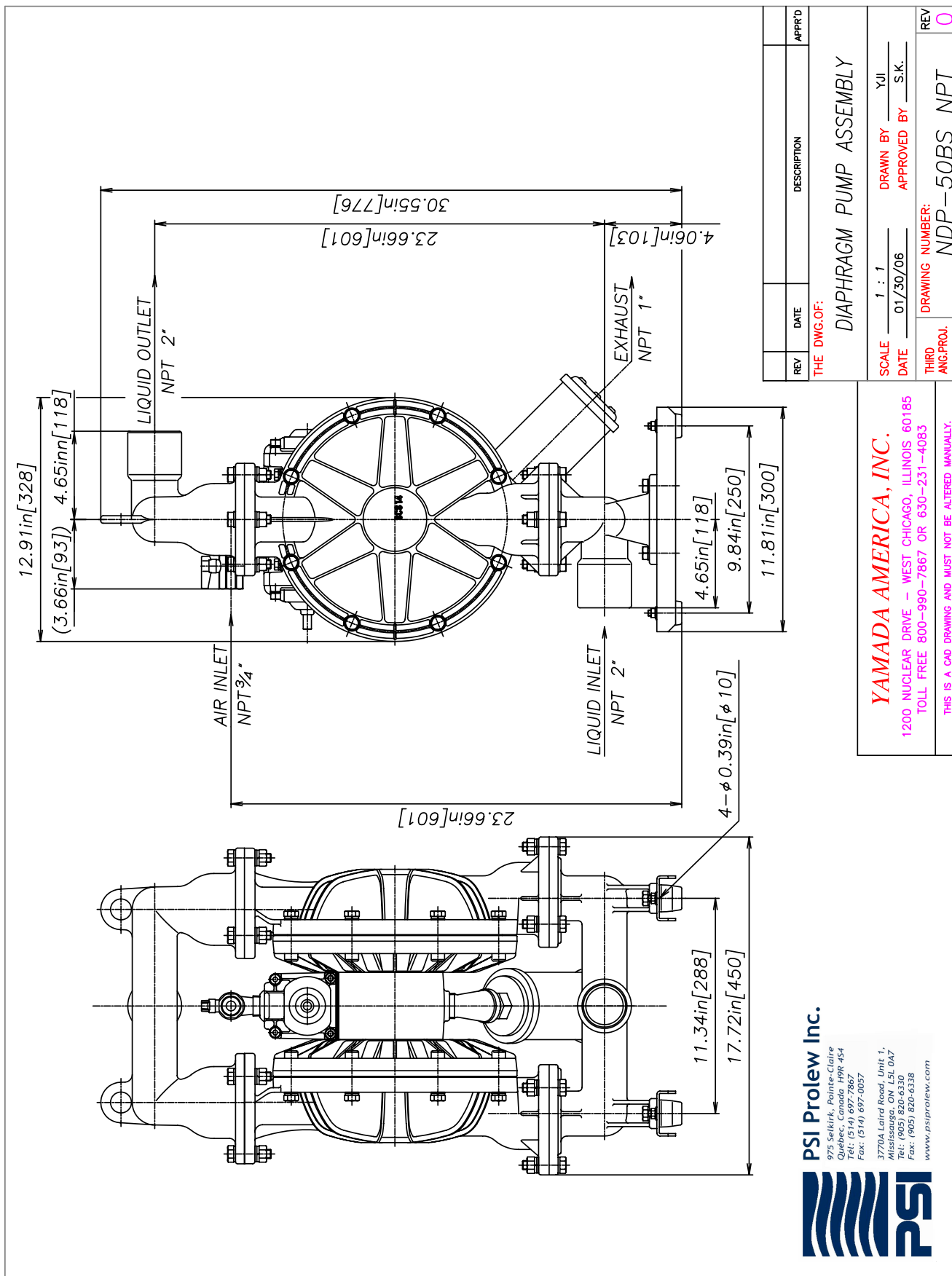
3770A Laird Road, Unit 1,  
Mississauga, ON L5L 0A7  
Tel: (905) 820-6330  
Fax: (905) 820-6338

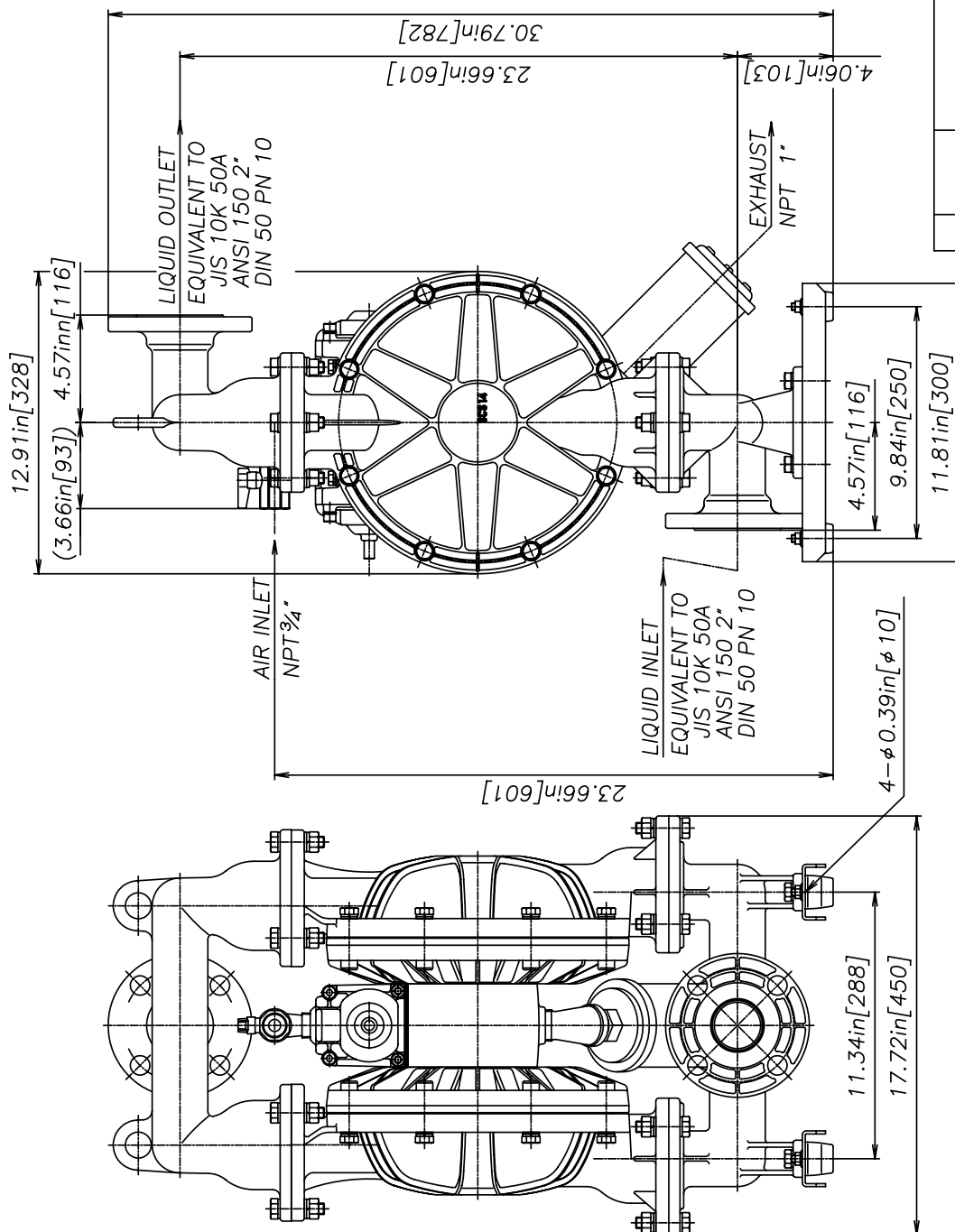
[www.psiprolew.com](http://www.psiprolew.com)



**Yamada America, Inc.** 955 E. Algonquin Road, Arlington Heights, IL 60005  
USA Toll-Free: 800 990-7867 Phone: 847 631-9200 Fax: 847 631-9273  
E-mail: [sales@yamadapump.com](mailto:sales@yamadapump.com) Web: [yamadapump.com](http://yamadapump.com)







REV	DATE	DESCRIPTION	APPR'D

THE DWG.OF:

DIAPHRAGM PUMP ASSEMBLY

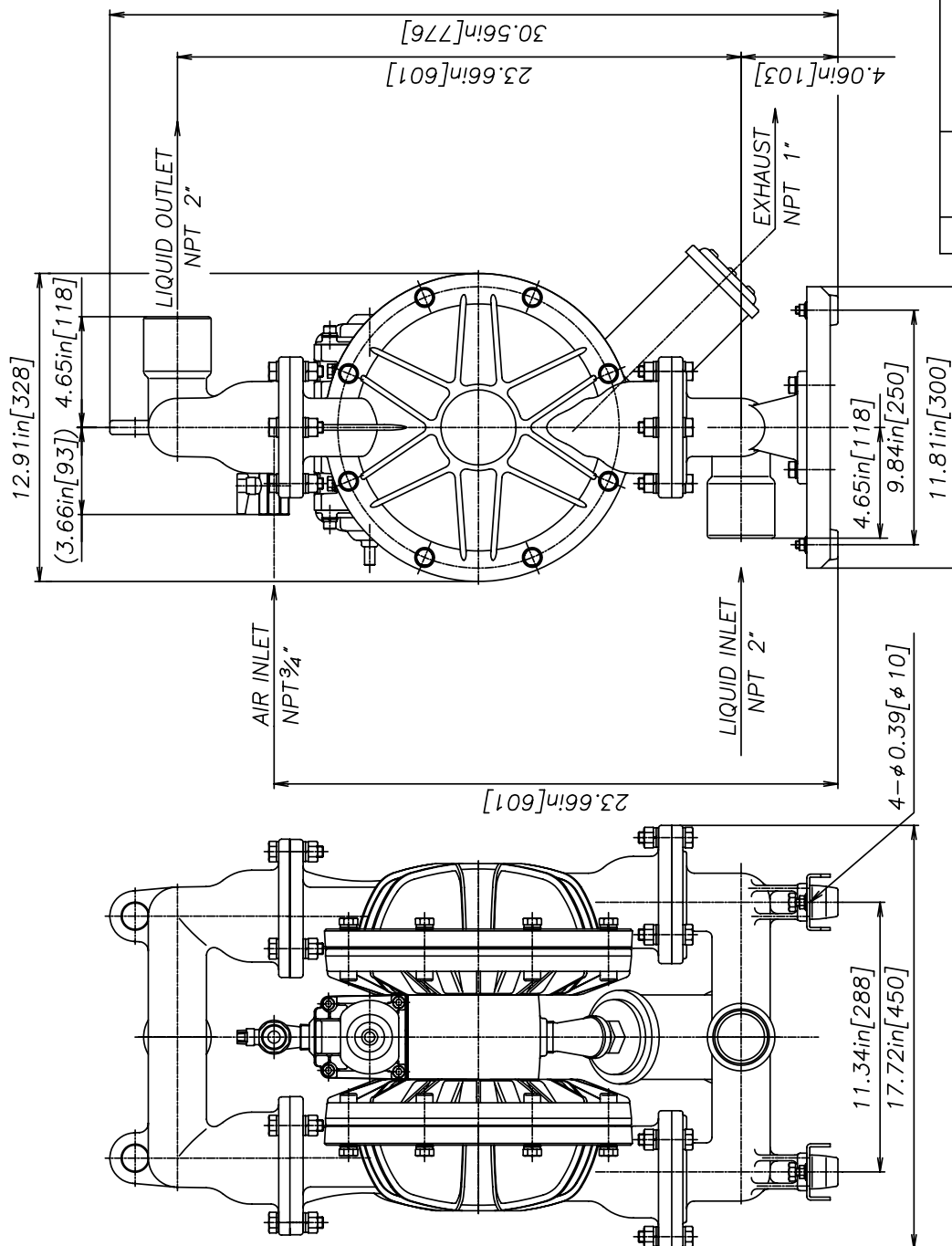
**YAMADA AMERICA, INC.**  
 1200 NUCLEAR DRIVE - WEST CHICAGO, ILLINOIS 60185  
 TOLL FREE 800-990-7867 OR 630-231-4083

SCALE 1 : 1  
 DATE 01/30/06  
 DRAWN BY YJL  
 APPROVED BY S.K.

THIRD ANG. PROJ.  
 DRAWING NUMBER:  
 NDP-50BS FLANGE 0

THIS IS A CAD DRAWING AND MUST NOT BE ALTERED MANUALLY.





REV	DATE	DESCRIPTION	APPR'D
-----	------	-------------	--------

THE DWG.OF:

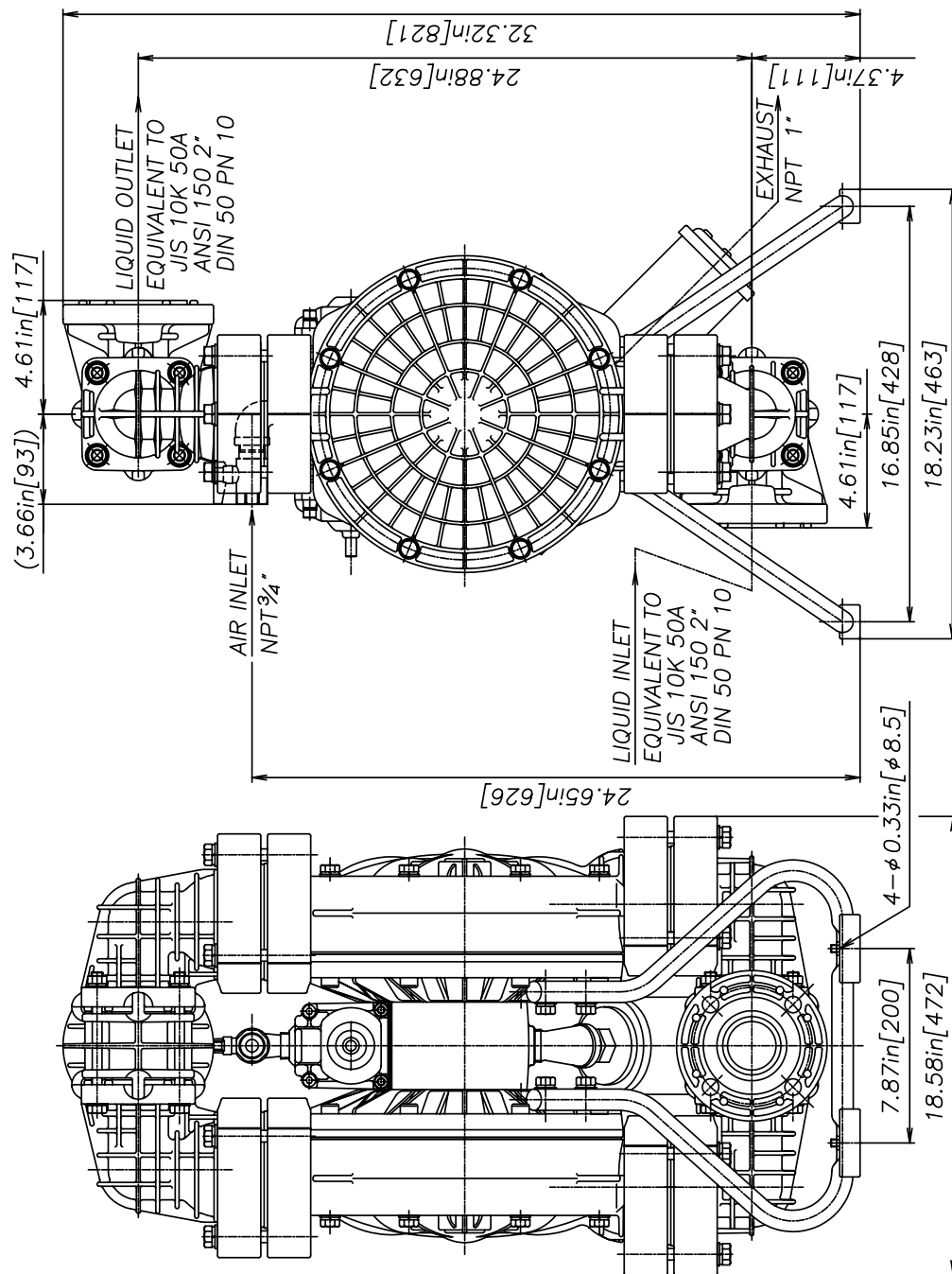
DIAPHRAGM PUMP ASSEMBLY

**YAMADA AMERICA, INC.**  
 1200 NUCLEAR DRIVE - WEST CHICAGO, ILLINOIS 60185  
 TOLL FREE 800-990-7867 OR 630-231-4083

SCALE 1 : 1  
 DATE 01/30/06  
 DRAWN BY YJL  
 APPROVED BY S.K.

THIRD ANG.PROJ.  
 DRAWING NUMBER: NDP-50BF  
 REV 0

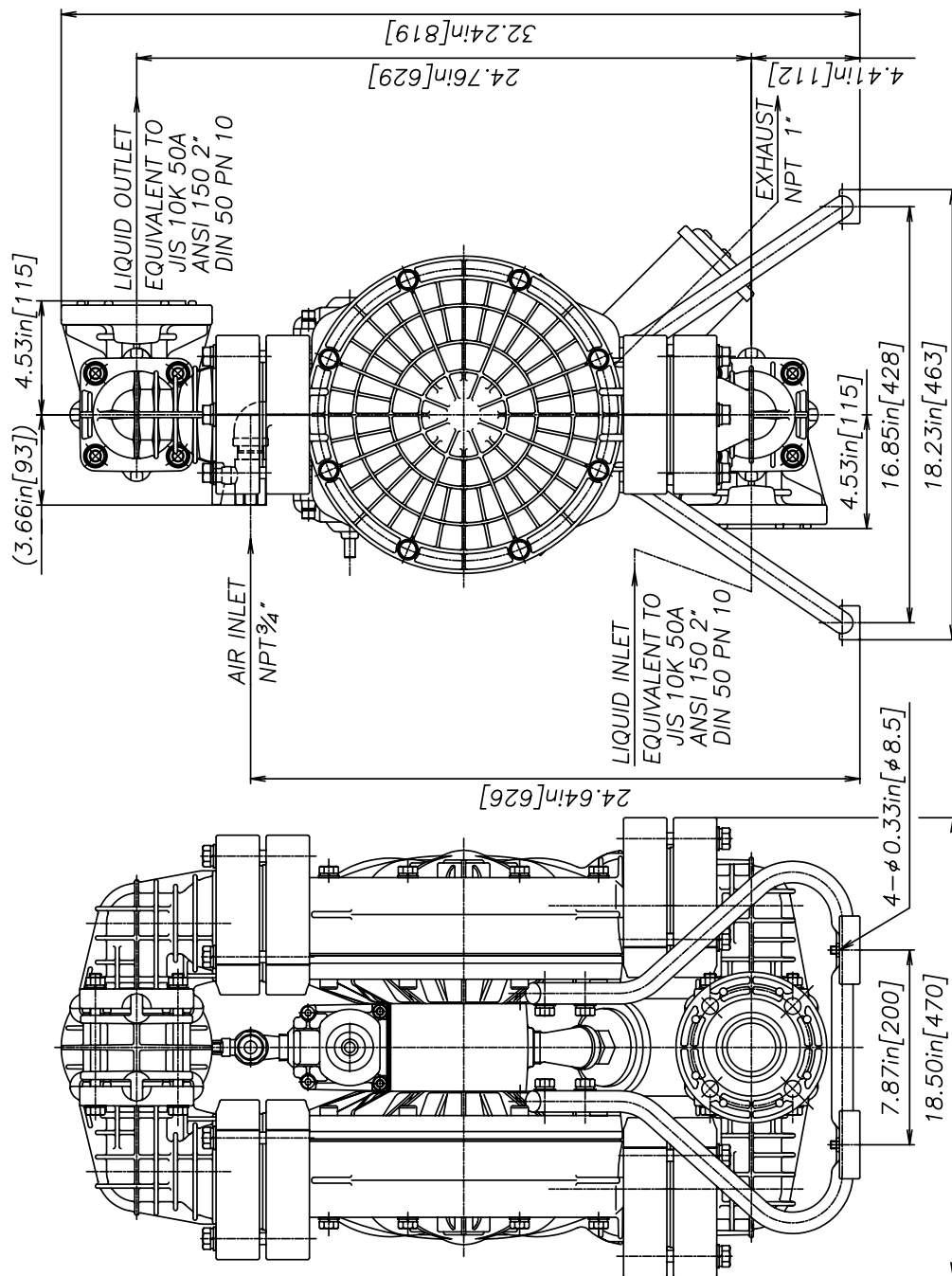
THIS IS A CAD DRAWING AND MUST NOT BE ALTERED MANUALLY.



REV	DATE	DESCRIPTION	APPR'D	
THE DWG. OF:				
DIAPHRAGM PUMP ASSEMBLY				
SCALE	1 : 1	DRAWN BY	YJI	
DATE	01/30/06	APPROVED BY	S.K.	
THIRD ANG. PROJ.	DRAWING NUMBER:	NDP-50BP		
REV				0

**YAMADA AMERICA, INC.**  
 1200 NUCLEAR DRIVE - WEST CHICAGO, ILLINOIS 60185  
 TOLL FREE 800-990-7867 OR 630-231-4083  
 THIS IS A CAD DRAWING AND MUST NOT BE ALTERED MANUALLY.





REV	DATE	DESCRIPTION	APPR'D	
THE DWG. OF:				
DIAPHRAGM PUMP ASSEMBLY				
SCALE	1 : 1	DRAWN BY	YJI	
DATE	01/30/06	APPROVED BY	S.K.	
THIRD ANG. PROJ.	DRAWING NUMBER:	NDP-50BV		
REV				0

**YAMADA AMERICA, INC.**  
 1200 NUCLEAR DRIVE - WEST CHICAGO, ILLINOIS 60185  
 TOLL FREE 800-990-7867 OR 630-231-4083  
 THIS IS A CAD DRAWING AND MUST NOT BE ALTERED MANUALLY.

AutoCAD® is a registered trademark of Autodesk, Inc.

Hytrel® is a registered trademark of E.I. du Pont de Nemours and Company.

Kynar® is a registered trademark of Arkema.

Nordel™ is a trademark of DuPont Dow Elastomers.

Ryton® is a registered trademark of Chevron Phillips Chemical Company.

Santoprene® is a registered trademark of Advanced Elastomer Systems.

Swagelok® & VCR® are trademarks of the Swagelok Companies.

Teflon® is a registered trademark of E.I. du Pont de Nemours and Company.

Viton® is a registered trademark of DuPont Performance Elastomers.

Due to Yamada's continued commitment to product improvement, specifications may change without notice.



**PSI Prolew Inc.**

975 Selkirk, Pointe-Claire  
Québec, Canada H9R 4S4  
Tél: (514) 697-7867  
Fax: (514) 697-0057

3770A Laird Road, Unit 1,  
Mississauga, ON L5L 0A7  
Tel: (905) 820-6330  
Fax: (905) 820-6338

[www.psiprolew.com](http://www.psiprolew.com)



**Yamada America, Inc.** 955 E. Algonquin Road, Arlington Heights, IL 60005  
USA Toll-Free: 800 990-7867 Phone: 847 631-9200 Fax: 847 631-9273  
E-mail: [sales@yamadapump.com](mailto:sales@yamadapump.com) Web: [yamadapump.com](http://yamadapump.com)